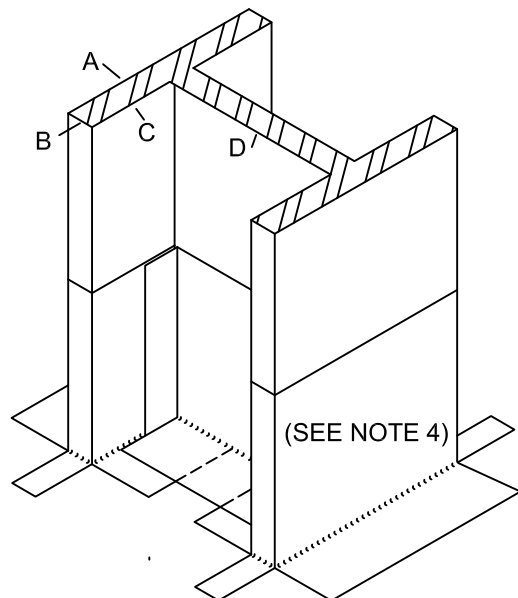


**NOTES:**

1. SURFACE PREP OF ALL SUBSTRATE MATERIALS SHOULD EXTEND  $\frac{1}{8}$ " MAX. BEYOND FLASHING TERMINATION POINT. ALL STEEL TO BE POWER TOOL CLEAN PER SSPC-SP3\*.
2. IN COVERED/BURIED CONDITIONS, THE FLASHING DETAIL SHOULD EXTENDED AS HIGH AS POSSIBLE. FLASHING MUST BE TERMINATED AT OVERBURDEN LEVEL AND NO LESS THAN 8" ABOVE SUBSTRATE.
3. ALL HYDROSEAL FLEECE, INCLUDING OVERLAPS, MUST BE SET IN AND COVERED OVER WITH HYDROSEAL RESIN.
4. COMPLETE THE INSTALLATION OF THE FLEECE FLANGE AND WEB "SKIRTS" BEFORE INSTALLING THE FLEECE "TARGET".
5. WHEN A BOLTED-IN-PLACE BASE PLATE IS INVOLVED, THE FLEECE "TARGET" MUST EXTEND 4" MINIMUM PAST THE EDGES OF THE PLATE

\*Society for Protective Coatings-Surface Preparation standard SP3 Power Tool Clean.



**HydroSeal**  
Deck Membrane

**AMERICAN HYDROTECH, INC.**

**TYPICAL "H" COLUMN PENETRATIONS**

SCALE: NONE  
DATE: 07/19

HS-6A