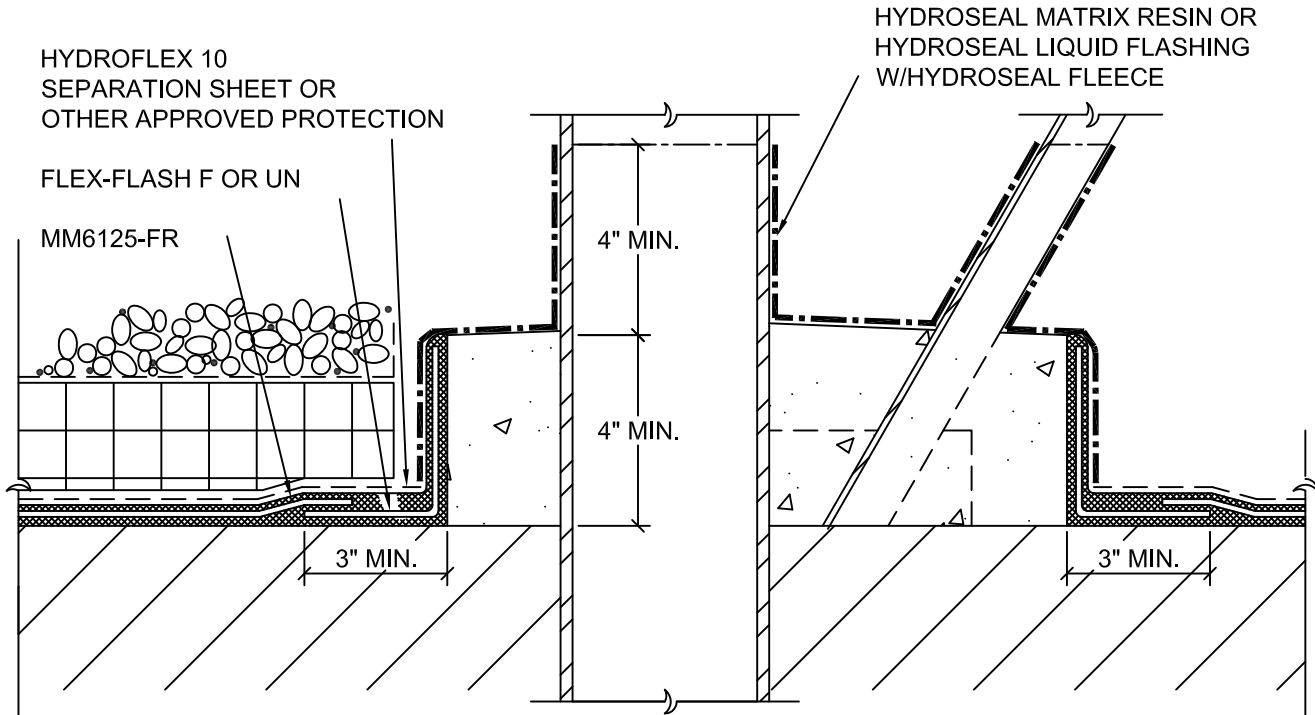


FOR COMPLEX CLUSTERED IRREGULAR SHAPED PENETRATIONS, REQUIRING THE USE OF HYDROSEAL RESIN FLASHING, IT WILL BE NECESSARY TO ENCLOSE THE PENETRATIONS IN CONCRETE CURBS.



NOTES:

1. PENETRATION SURFACE MUST BE CLEAN AND FREE OF ALL RUST AND OTHER CONTAMINANTS, IN ADDITION TO WIPING W/SURFACE CONDITIONER FOR PROPER ADHESION OF MM6125.
2. IN COVERED/BURIED CONDITIONS, THE FLASHING DETAIL SHOULD EXTENDED AS HIGH AS POSSIBLE. FLASHING MUST BE TERMINATED AT OR ABOVE OVERBURDEN LEVEL AND NO LESS THAN 8" ABOVE SUBSTRATE.
3. HYDROSEAL RESIN SHOULD BE APPLIED DIRECTLY OVER PRIMED MM6125
4. FOR PENETRATIONS THAT WOULD BE DIFFICULT TO WRAP WITH HYDROSEAL FLEECE REINFORCEMENT (i.e., BACK-TO-BACK ANGLES, GUSSET PLATE INTERFACE), HYDROSEAL MATRIX RESIN, W/INTEGRAL FIBER REINFORCEMENT, MAY BE USED.
5. CAST-IN-PLACE CONCRETE CURBS MUST BE ALLOWED PROPER TIME TO CURE/DRY PRIOR TO THE APPLICATION OF MM6125. (STR.WT. CONC.=28 DAYS, 14 DAYS MIN.; MODIFIED CONC. MATERIALS PER MANUFACTURER'S RECOMMENDATIONS)



**Monolithic
Membrane
6125-FR**
ROOFING SYSTEMS

AMERICAN HYDROTECH, INC.

**COMPLEX CLUSTERED IRREGULAR
SHAPED PENETRATIONS**

**SCALE: NONE
DATE: 12/01/17**

R-10D