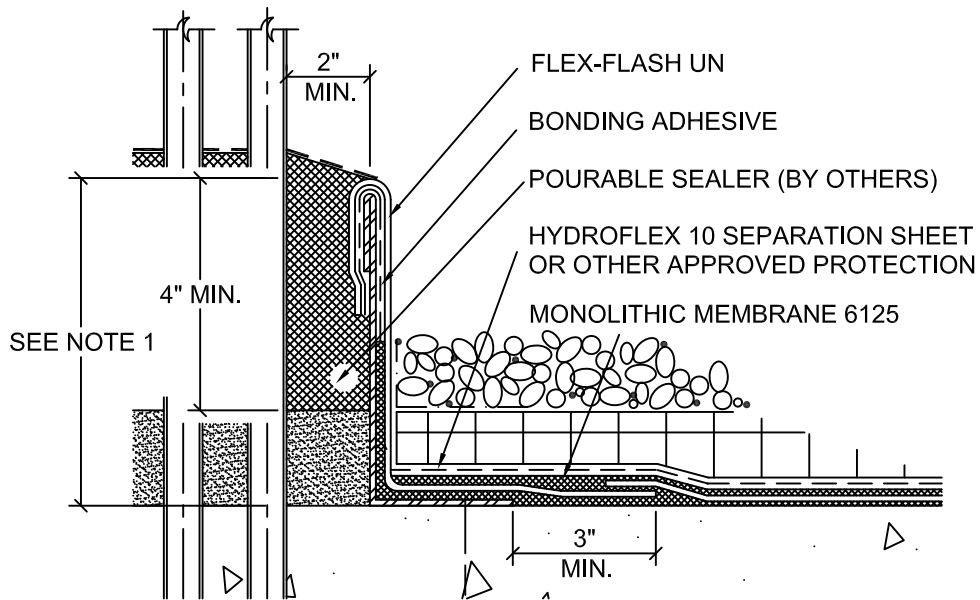


INDIVIDUAL PENETRATIONS



CLUSTERED PENETRATIONS

NOTES:

1. TOP OF PITCH POCKET (TOTAL HEIGHT) SHOULD BE AT OR HIGHER THAN THE SURFACE OF THE BALLAST/TOPPING. MEMBRANE "FILL" MUST BE A MINIMUM OF 4" DEEP. EXCESS DEPTH MAY BE FILLED WITH A NON-SHRINK GROUT.
2. POCKET SHOULD BE FILLED SO AS TO PROVIDE A POSITIVE WATER SHED (SLOPE).
3. POURABLE SEALER MUST BE MAINTAINED OVER THE TERM OF ANY WARRANTY.
4. IN COVERED/BURIED CONDITIONS, THE FLASHING DETAIL SHOULD EXTENDED AS HIGH AS POSSIBLE. FLASHING MUST BE TERMINATED AT OVERBURDEN LEVEL AND NO LESS THAN 8" ABOVE SUBSTRATE.



**Monolithic Membrane 6125-FR**  
ROOFING SYSTEMS

**AMERICAN HYDROTECH, INC.**

**TYP. CONDUIT PENETRATION & PITCH POCKET**

SCALE: NONE DATE: 02/04/19	R-7A
-------------------------------	------